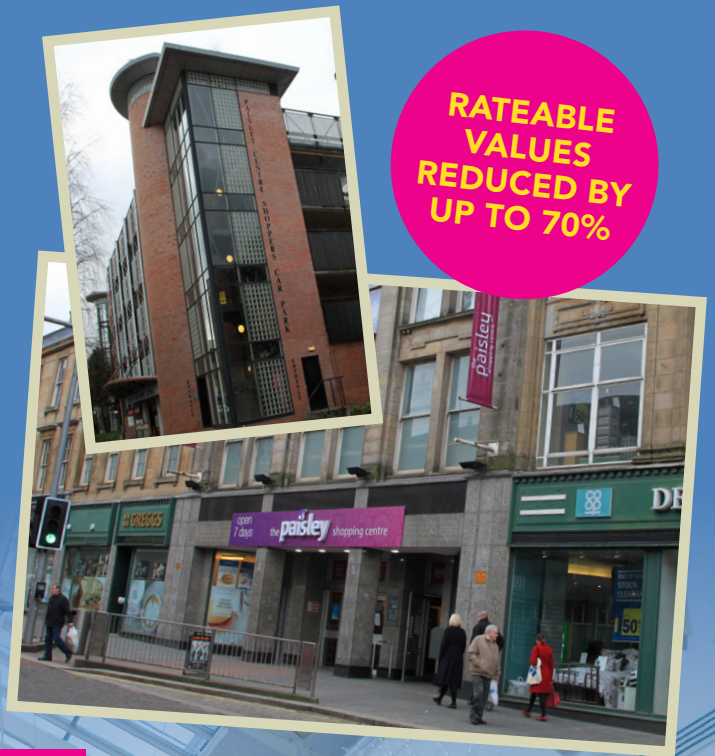


the paisley shopping centre

The Heart of Paisley

RATEABLE
VALUES
REDUCED BY
UP TO 70%



12 MONTH LEASES AVAILABLE ON AN ALL-INCLUSIVE, MONTHLY BASIS

SHORT TERM STORAGE OPTIONS NOW AVAILABLE

• Scheme anchored by



and

savers
HEALTH HOME BEAUTY

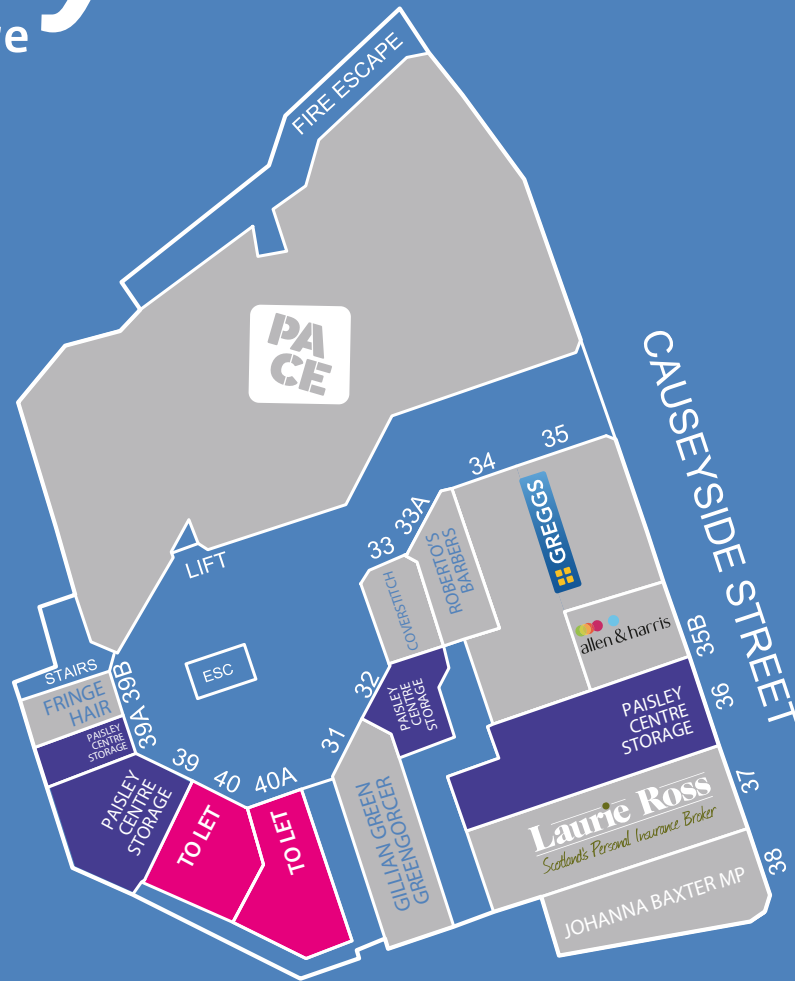
- 530 spaces within directly adjacent car-park
- Excellent public transport links
- University town in the region of 10,000 students attending University of the West of Scotland
- Other key tenants include:

HOWDEN

GREGGS

allen & harris

PA1 2AF



TO LET

UNIT	GROUND FLOOR	ANCILLARY	RATEABLE VALUE	ALL INCLUSIVE MONTHLY RENT*
2C	298 sq ft (27.7 sq m)	N/A	£3,200	£395
5	1,548 sq ft (143.8 sq m)	1,452 sq ft (134.9 sq m)	£7,400	£795
15	1,197 sq ft (111.2 sq m)	834 sq ft (77.5 sq m)	£7,200	£695
26	917 sq ft (85.2 sq m)	919 sq ft (85.4 sq m)	£6,800	£1,295
40	715 sq ft (66.4 sq m)	N/A	£6,600	£595
40A	801 sq ft (74.4 sq m)	N/A	£6,300	£695

* Monthly rent on the basis of a 12 month licence, inclusive of service charge and insurance, exclusive of VAT, business rates and all utilities.



Richard Ford
richard@reithlambert.co.uk
0141 225 5710
07834 791 163

PA1 2AF

PAISLEY CENTRE STORAGE

UNIT	GROUND FLOOR	FIRST FLOOR	MONTHLY RENT*
1	707 sq ft (66 sq m)	4,381 sq ft (407 sq m)	£495
13	1,589 sq ft (148 sq m)	1,200 sq ft (111 sq m)	£695
14	1,998 sq ft (187 sq m)	1,885 sq ft (175 sq m)	£725
K4	248 sq ft (23 sq m)	N/A	£295
17	1,824 sq ft (169 sq m)	377 sq ft (35 sq m)	£695
21	1,171 sq ft (109 sq m)	N/A	£595
24	844 sq ft (78 sq m)	N/A	£495
26A	184 sq ft (17 sq m)	82 sq ft (8 sq m)	£295
32	414 sq ft (38 sq m)	N/A	£395
36	685 sq ft (64 sq m)	366 sq ft (34 sq m)	£495
39	849 sq ft (79 sq m)	N/A	£495
39A	266 sq ft (25 sq m)	N/A	£295

* Monthly fee assuming month to month, flexible licence, inclusive of service charge, insurance, utilities and business rates. VAT is not applicable.

PAISLEY CENTRE
STORAGE
 FLEXIBLE, SHORT-TERM
 STORAGE OPTIONS
 PLEASE CALL: 07718 081 870

April McMillan
 april.paisleycentrestorage@hotmail.com
 07718 081 870